

INTERNATIONAL SKILL ENHANCEMENT TRAINING (iSET) 2019

CLASS 10

- Max Marks 100
- All questions are compulsory.
- Each question carries 2 marks.

Name: _____

Reg No.: _____

1. Which of the following will complete the series:
xy _ z _ xxyx _ px _ yxzpx _ yxzpx
a. xpzxx
b. yxyzx
c. yxzpx
d. zyxy
2. Who was defeated by Novak Djokovic to win the Wimbledon 2019?
a. Rafael Nadal
b. Roger Federer
c. Kevin Anderson
d. Alexander Zverev
3. If A + B means A is the mother of B; A - B means A is the brother B; A % B means A is the father of B and A x B means A is the sister of B, which of the following shows that P is the maternal uncle of Q?
a. Q - N + M x P
b. Q - S % P
c. P + S x N - Q
d. P - M + N x Q
4. "My Story" is the autobiography of which of these writers?
a. Arundhati Roy
b. Kamala Suraiyya
c. Sarah Joseph
d. Sugatha Kumari
5. Who created the character Sherlock Holmes?
a. Arthur Conan Doyle
b. Agatha Christie
c. Edger Allen Poe
d. Ross MacDonalds
6. What is the full form of SIM-
a. Subscribed Indemnity Mode
b. Subscriber Identity Module
c. Subscribers Infinite Module
d. Subscribed Identity Mode

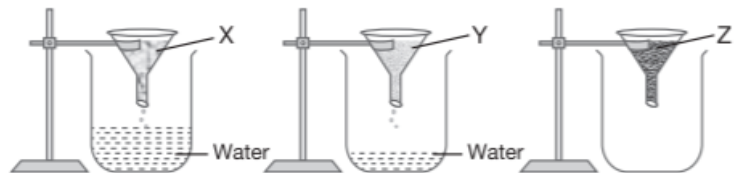
7. 4 people are climbing a mountain. Zubaid was closer to the peak than Arif but farther than Ishan. Arif was closer to the peak than Akram but farther than Ishan. Who is second closest to the peak?
- Zubaid
 - Akram
 - Ishan
 - Arif

8. _____ is regarded as the founder of Jainism.
- Buddha
 - Mahavira
 - Zoroaster
 - None of these

9. 100 gms of three types of soil were put in a funnel and each funnel was put on an empty beaker using stands. Then 60 mL water was poured over each of them.

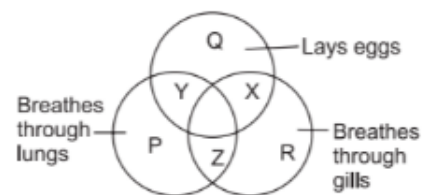
The result is shown in the given figure. Identify the soil types and select the correct option.

- X is clay and Y is gravel.
- Y is gravel and Z is sand.
- X is sand and Y is clay.
- Y is sand and Z is clay.



10. Study the following Venn diagram carefully. Which letter represents the hen?

- Y
- X
- Z
- R



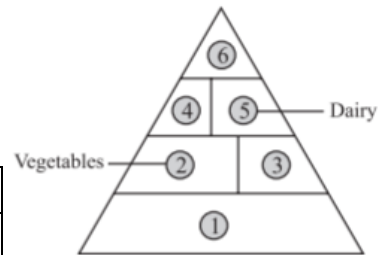
11. What is the name of the Lander used in Chandrayaan 2 which lost communication with the mission in its last stages?

- Vindhya
- Vikranath
- Vikram
- Vibrant

12. The term 'Reduce' is one of the three R's (reduce, reuse and recycle) to save the environment. An example of the opposite of reducing is over-packaging which is an anti-environment activity. Which of the following packaging activities is anti-environment?

- Filling a cereal box completely
- Putting an item in a cardboard box, then putting that box in another box
- Putting foam packing material around a fragile item
- Packing an item in the smallest possible box

13. Identify 1, 3, 4 and 6 in the given pyramid and select the correct option. 1 3 4 6
 (A) Fruits Grains Proteins Sweets and fats (B) Grains Fruits Proteins Sweets and fats (C) Proteins Fruits Grains Sweets and fats (D) Fruits Proteins Fats Grains



	1	3	4	6
a.	Fruits	Grains	Proteins	Sweets and Fats
b.	Grains	Fruits	Proteins	Sweets and Fats
c.	Proteins	Fruits	Grains	Sweets and Fats
d.	Fruits	Proteins	Sweets and Fats	Grains

14. Multimedia is used for many purposes like _____.

- Education
- Advertising
- Playing games
- All of these

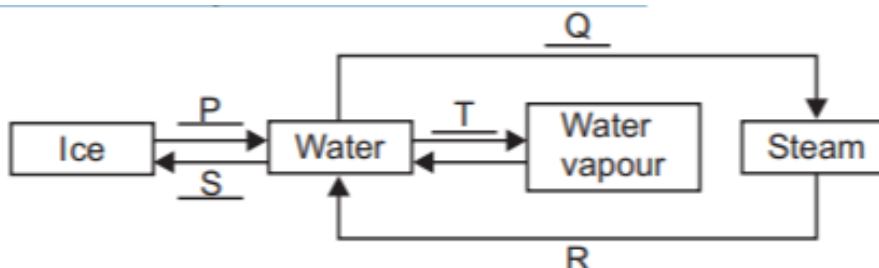
15. Match the underlined phrase with its correct meaning. Mother tried in vain to make her finish her milk.

- unable to do something
- using a pipe
- without success
- with success

16. The first full length silent Indian feature film is _____.

- Raja Harishchandra
- Alam Ara
- Mughal-E-Azam
- Sholay

17. Observe the given diagram carefully and fill in the blanks.

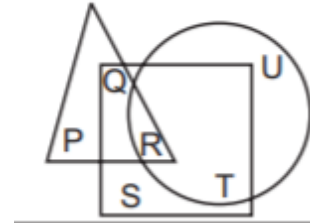


	P	Q	R	S	T
a.	Freezing	Boiling	Condensation	Melting	Evaporation
b.	Freezing	Evaporation	Boiling	Melting	Condensation
c.	Melting	Boiling	Condensation	Freezing	Evaporation
d.	Melting	Evaporation	Condensation	Freezing	Boiling

18. A farmer who regularly won prizes for best crop output explained the reason for his success as "I share my best seeds with my neighbour farmers". Why did he do this?

- a. He did not want his neighbours to be jealous.
- b. He really liked his neighbours.
- c. This ensured better pollination for his crops.
- d. He is a generous person. He likes to share.

19. In the given figure, the triangle represents girls, square represents sportspersons and circle represents coaches. Which portion of the figure represents girls who are sportspersons but not coaches?



- a. P
- b. Q
- c. R
- d. S

20. Which of the following options will complete the given series?



a.	b.	c.	d.

21. Anuradha remembers that her friend had visited her after 13th but before 18th of the month, while Anuradha's sister remembers that Anuradha's friend had visited after 16th but before 20th. If it was Saturday on 16th, of the month, then on which day of the week, Anuradha's friend visit her?

- a. Saturday
- b. Monday
- c. Sunday
- d. None of these

22. In a quiz, 40 prizes consisting of 1st and 2nd prizes only are to be given. 1st and 2nd prizes are worth ` 2500 and ` 1500, respectively. If the total prize money is ` 85,000, then

- (i) The equation formed is
- (ii) The number of 1st prizes are
- (iii) The number of 2nd prizes are

	(i)	(ii)	(iii)
a.	$2500x + 1500(40 - x) = 85000$	25	15
b.	$2500x - 1500(40 - x) = 85000$	36	4
c.	$2500x \times 1500(x - 40) = 85000$	20	20
d.	$2500x - 1500(x - 40) = 85000$	15	25

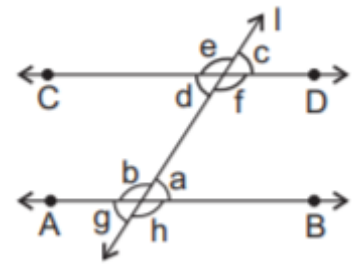
Study the given statements.

Statement - I : e and h are supplementary angles.

Statement - II : c and g are equal angles.

Which of the following options is correct?

- Both statement-I and statement-II are true.
- Statement-I is true and statement-II is false.
- Statement-I is false and statement-II is true.
- Both statement-I and statement-II are false.



23. In which sentence is the word 'to' correctly used?

- This watermelon is to heavy.
- Hold it with to hands.
- It's very slippery to.
- Well, hand it to me.

24. Demand for a commodity refers to:

- Quantity demanded of that commodity at a desired price.
- Desire for the commodity at a unavailable price and at a desired time.
- Amount of the commodity available for the customers.
- Amount of the commodity demanded at a particular price and at a particular time

25. GNP refers to _____

- Gross Natural Presentation
- Gross Natural Product
- Gross National Product
- Gradual National Presentation

Fill in the blanks:

26. I am happy you are helping me with the assignment. This kind of work is not really my _____.

- cup and sauce
- cup of tea
- cup of coffee
- tea cup

27. He seems to know a lot about you! How long have you _____ him?

- known
- knew
- been knowing
- know

28. An important contribution of Raja Ram Mohan Roy in pushing social reforms was _____.

- Opening the Banaras Hindu University
- Abolition of Sati system
- Opening of Shanti Niketan
- Starting the Rama Krishna Mission

29. group of tissues_working together to perform a common function is called_____.

- A Cell

- b. A Specialised cell
- c. An Organ
- d. An organ system

30. Change the given direct sentence to indirect. "Drive carefully!" Ram said to me.

- a. Ram said to me drive carefully.
- b. Ram ordered me drive carefully.
- c. Ram told me to drive carefully.
- d. None of these

31. Which woman boxer holds the Commonwealth Gold in flyweight category

- a. Geeta Kumari Phogat
- b. Babita Kumari Phogat
- c. Mary Kom
- d. Karnam Malleshwari

32. An authority in geology and agriculture, he also designed the Indian National flag. Who was he?

- a. Gopal Krishna Gokhale
- b. Lala Lajpat Rai
- c. Pingali Venkayya
- d. Bipin Chandra Pal

33. The Aadhaar card carries

- a. Address of the card holder
- b. Fingerprints of individuals
- c. Biometric and demographic data of residents
- d. Biometric and income status of residents

State whether true or false:

34. Atomic bombs work by atomic fission.

35. The study of plants is known as botany.

36. In all living things, the basic unit of life is the nucleus. Match the following years with their significance in the Independence Movement of India:

	Year	Incident
37.	1920	First war of Independence
38.	1919	Quit India Movement
39.	1857	Execution of Bhagat Singh, Rajguru and Sukhdev
40.	1931	Jallianwala Bagh Massacre
41.	1942	Beginning of the non-cooperation movement

Read the following passage and answer the questions that follow

Have you ever wondered what keeps a hot air balloon flying? The same principle that keeps food frozen in the open chest freezers at the grocery store allows hot air balloons to fly. It's a very basic principle: Hot air rises and cold air falls. So, while the super-cooled air in the grocery store freezer settles down around the food, the hot air in a hot

air balloon pushes up, keeping the balloon floating above the ground. In order to understand more about how this principle works in hot air balloons, it helps to know more about hot air balloons themselves.

A hot air balloon has three major parts: the basket, the burner, and the envelope. The basket is where passengers ride. The basket is usually made of wicker. This ensures that it will be comfortable and add little extra weight. The burner is positioned above the passenger's heads and produces a huge flame to heat the air inside the envelope. The envelope is the colourful fabric balloon that holds the hot air. When the air inside the envelope is heated, the balloon rises.

The pilot can control the up-and-down movements of the hot air balloon by regulating the heat in the envelope. To ascend, the pilot heats the air in the envelope. When the pilot is ready to land, the air in the balloon is allowed to cool and the balloon becomes heavier than air. This makes the balloon descend.

Before the balloon is launched, the pilot knows which way the wind is blowing. This means that she has a general idea about which way the balloon will go. But sometimes the pilot can actually control the direction that the balloon flies while in flight. This is because the air above the ground is sectioned into layers in which the direction of the wind may be different. So even though the pilot can't steer the balloon, she can fly or higher or lower into a different layer of air. Some days the difference between the direction of the wind between layers is negligible. But other days the difference is so strong that it can push the balloon in a completely different direction!

42. According to the passage, balloon pilots control the balloon's altitude by
- moving into a different layer of air
 - regulating the air temperature inside the balloon
 - adjusting the amount of air in the envelope
 - changing the amount of weight contained in the basket
43. As used in paragraph 3, which is the best synonym for ascend?
- move
 - fly
 - sink
 - climb
44. As used in paragraph 3, which is the best antonym for descend?
- Fall
 - float
 - rise
 - drop
45. According to the author, wicker is
- comfortable
 - lightweight
 - durable
- I only
 - I and II only
 - II and III only
 - I, II, and III

46. If the hot air balloon pilot wants to change directions during flight, what might he or she do to accomplish this?
- head toward a mountain peak
 - wait for it to rain
 - fly into a cloud
 - fly higher
47. Using the passage as a guide, it can be inferred that which of the following statements is not true?
- Air goes up and out the top of a chimney when you light a fire.
 - Cool air collects about the ceiling when you open a refrigerator.
 - Smoke from a candle rises after you blow out the flame.
 - Cold air coming from an air conditioning vent settles about the floor.
48. Based on its use in paragraph 4, it can be understood that negligible belongs to which of the following word families?
- solemn, grave, serious
 - substantial, considerable, large
 - exhilarating, thrilling, exciting
 - insignificant, small, unnoticeable
49. If you have empathy that means _____.
- You have a strong point of view
 - You can understand what is told to you
 - No matter what you like to have your way
 - You can see things from other person's viewpoint
50. Pointing to a photograph, a woman says, "He is the only son of the wife of my husband's father." How is the man related to the woman?
- Son
 - Son-in-law
 - Brother-in-law
 - Husband